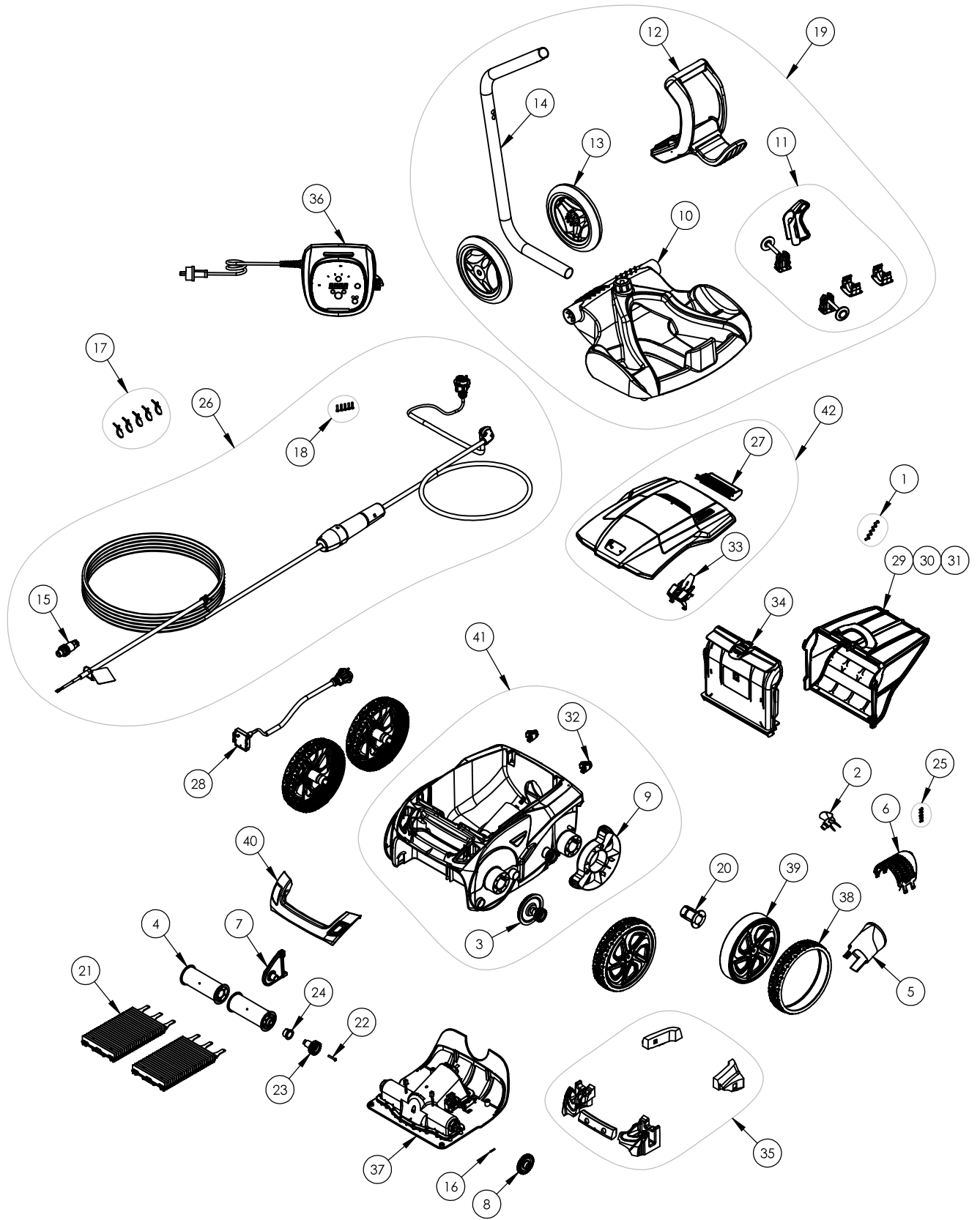




# RA 6700 iQ

Spare Parts



Position	Description	Reference
1	Screws 4*12 mm (x5)	R0516700
2	Propeller	R0517000
3	Transmission	R0517200
4	Brush roller	R0517400
5	Flow Outlet	R0517500
6	Motor screen	R0517600
7	Roller support	R0518700
8	Drive gear (Set of 2)	R0518800
9	Cover wheels protection	R0540300
10	Caddy base	R0564800
11	Caddy Accessories	R0564900
12	Caddy Handle	R0565000
13	Caddy wheels (*2)	R0565100
14	Caddy tube	R0565200
15	Floating cable plug	R0565600
16	Motor block Shaft pin (Set of 5)	R0567800
17	Floating cable clamp (Set of 5)	R0567900
18	Screw 4*16mm (Set of 5)	R0608500
19	Complete Trolley	R0609100
20	Wheel bushing Zodiac	R0636700
21	Brush (Set of 2)	R0638800
22	Screw 4*25 mm (Set of 5)	R0638900
23	17 Gear (*2)	R0639000
24	Outer bearing (*2)	R0639100
25	Screw 2.9*9.5 mm (Set of 5)	R0639200
26	Floating Cable swivel 21M	R0726700
27	Back cover assembly	R0863200
28	Sensor Block assembly	R0863300
29	Ultra Fine Filter 60µ	R0863500
30	Fine Filter 100µ	R0863600
31	Large Filter 200µ	R0863700
32	Roller, 2PK	R0864900
33	Cover Latch	R0865000
34	Filter Canister Support	R0865100
35	Float	R0865200
36	Control Box Type 1	R0865300
37	Motor Block Type 2	R0865400
38	Tire black R7021	R0865500
39	Rim black R7021 and Silver	R0865600
40	Handle with sensor Navy Blue/Silver	R0865700
41	Main Housing Navy Blue	R0865800
42	Complete cover	R0865900