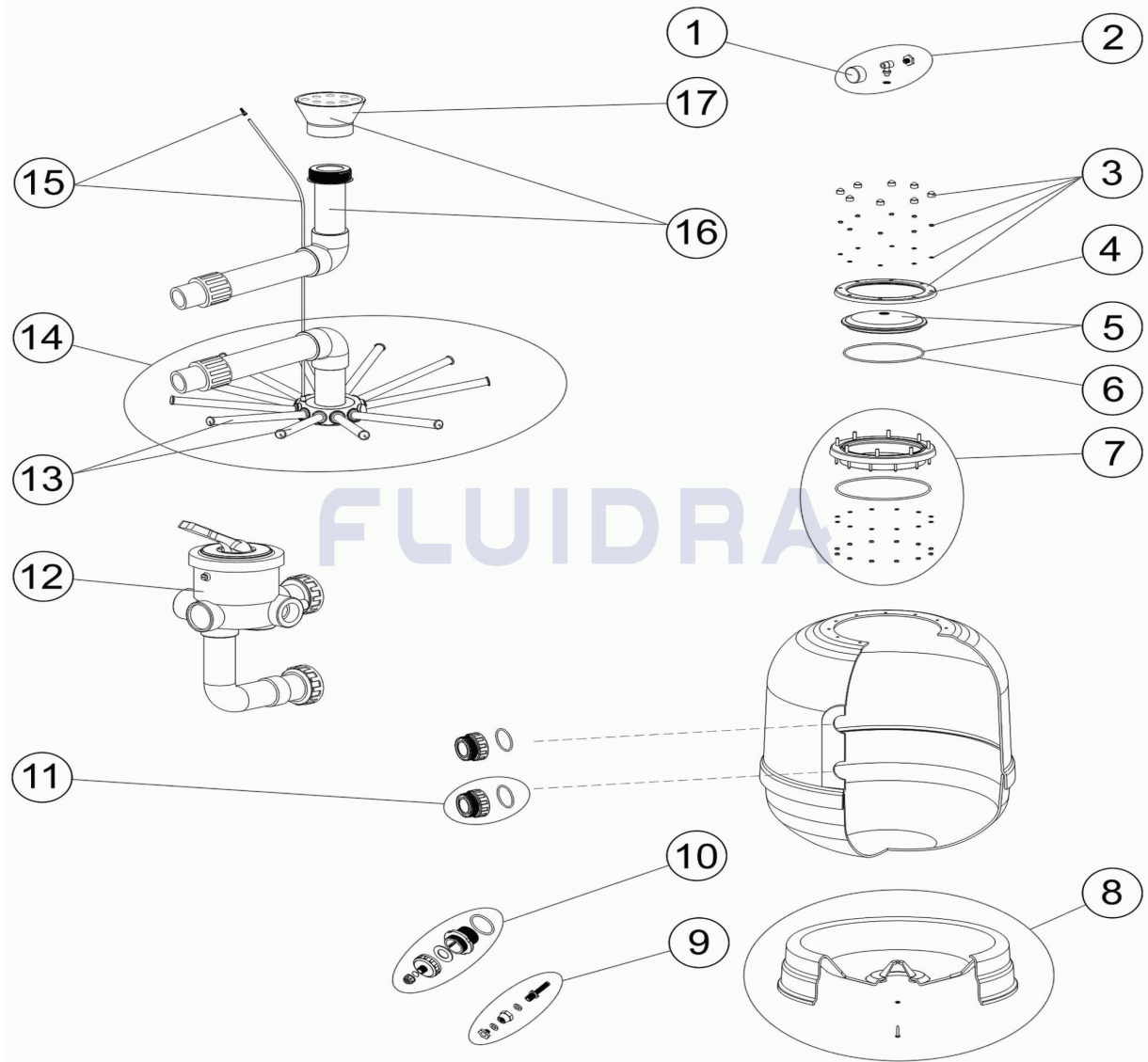


CODE **WF000094, WF000095, WF000096, WF000097, WF000098**

DESCRIPTION: **MS FILTERS D.470-530-650-800-950**



ENGLISH

POS	CODE	DESCRIPTION	QUANTITY	POS	CODE	DESCRIPTION	QUANTITY
1	R0831200	PRESSURE GAUGE 1/8" 3 KG./C "		11	* R0832600	2" OUTLET FITTING + O'RING "	
2	R0831100	COMPLETE PRESSURE GAUGE UNIT		11	* R0832500	OUTLET UNION 1 1/2" + O-RING	
3	R0831300	LIF FIXING RING		12	* 09758	NEUTRAL MULTIPORT VALVE 1 1/2"	
4	R0831600	LID FIXING RING		12	* 14904	MULTIPORT VALVE 2"	
5	R0831500	TRANSPARENT LID D.220 + 'O' RING		13	* R0835200	MANIFOLD ARM ASSEMBLY D. 400	
5	R0842400	FILTER LID D. 220 BLACK		13	* R0835300	MANIFOLD ARM ASSEMBLY	
6	R0831400	VALVE TOP RING FIXING GASKET		13	* R0835400	MANIFOLD ARM ASSEMBLY D. 650	
7	R0831700	20-SCREW NECK RING		13	* R0835500	MANIFOLD ARM ASSEMBLY D. 750	
8	* R0831900	FILTER BASE D. 450		14	* R0832900	MANIFOLD ASSEMBLY D. 450	
8	* R0831800	FILTER BASE D. 500		14	* R0833000	MANIFOLD ASSEMBLY D. 500	
8	* R0832000	FILTER BASE D. 600		14	* R0833100	MANIFOLD ASSEMBLY D. 650	
8	* R0832100	FILTER BASE D. 800		14	* R0833200	MANIFOLD ASSEMBLY D. 750	
8	* R0832200	FILTER BASE D. 950		14	* R0833300	MANIFOLD ASSEMBLY D. 900	

* SEE OBSERVATIONS SHEET

CODE **WF000094, WF000095, WF000096, WF000097, WF000098**

DESCRIPTION: **MS FILTERS D.470-530-650-800-950**

9	R0832300	WATER PURGE 3/8"	15	* R0835600	AIR PURGE + PIPE L=670
10	R0832400	2 1/2" DRAIN SE "	15	* R0835700	RIGID PIPE L-845
16	* R0833900	DIFFUSER ASSEMBLY D. 450	16	* R0834300	DIFFUSER ASSEMBLY D. 900
16	* R0834000	DIFFUSER ASSEMBLY D. 500	17	* R0833700	DISTRIBUTOR 1 1/2"
16	* R0834100	DIFFUSER ASSEMBLY D. 650	17	* R0833800	DISTRIBUTOR 2"
16	* R0834200	DIFFUSER ASSEMBLY D. 750			